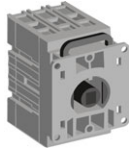


Ordering information

Front operated switch-disconnectors

OT16...40FT3
S00260A



OT63...80FT3
S00690A



OT100...125FT3
S01341A



Switch-disconnectors, door mounting

Include protected terminal clamps, IP20.
The type and ordering numbers are for one piece.

| Number of poles | I _{th} (open) [A] | Cable cross section [mm ²] | Rated operat. currents AC22A/AC23A 400V [A/A] | Type | Order number | Delivery batch [pcs] | Weight/unit [kg] |
|---|----------------------------|--|---|----------------|------------------------|----------------------|------------------|
| | | | | | | | |
| Shaft and handle need to be ordered separately | | | | | | | |
| 3 | 25 | 0.75...10 | 16/16 | OT16FT3 | 1SCA104838R1001 | 10 | 0.13 |
| 4 | 25 | 0.75...10 | 16/16 | OT16FT4N2 | 1SCA105711R1001 | 10 | 0.16 |
| 3 | 32 | 0.75...10 | 25/20 | OT25FT3 | 1SCA104884R1001 | 10 | 0.13 |
| 4 | 32 | 0.75...10 | 25/20 | OT25FT4N2 | 1SCA104900R1001 | 10 | 0.16 |
| 3 | 40 | 0.75...10 | 40/23 | OT40FT3 | 1SCA104940R1001 | 10 | 0.13 |
| 4 | 40 | 0.75...10 | 40/23 | OT40FT4N2 | 1SCA104956R1001 | 10 | 0.16 |
| 3 | 63 | 1.5...35 | 63/45 | OT63FT3 | 1SCA105382R1001 | 10 | 0.28 |
| 4 | 63 | 1.5...35 | 63/45 | OT63FT4N2 | 1SCA105393R1001 | 10 | 0.35 |
| 3 | 80 | 1.5...35 | 80/75 | OT80FT3 | 1SCA105431R1001 | 10 | 0.28 |
| 4 | 80 | 1.5...35 | 80/75 | OT80FT4N2 | 1SCA105499R1001 | 10 | 0.35 |
| 3 | 115 | 10...70 | 100/80 | OT100FT3 | 1SCA105023R1001 | 10 | 0.40 |
| 4 | 115 | 10...70 | 100/80 | OT100FT4N2 | 1SCA105031R1001 | 10 | 0.54 |
| 3 | 125 | 10...70 | 125/90 | OT125FT3 | 1SCA105060R1001 | 10 | 0.40 |
| 4 | 125 | 10...70 | 125/90 | OT125FT4N2 | 1SCA105066R1001 | 10 | 0.54 |

