

IEC Contactors

C-2000

Nonreversing and Reversing

AC/DC Controlled, 3-Pole

HP Ratings AC-3 Duty

100-500 Hp (460V) Nonreversing Bus Bar Terminals without Lugs

Maximum Current @ 460 V (A) AC-3	3-Phase HP @60 Hz, 200V	3-Phase HP @60 Hz, 230V	3-Phase HP @60 Hz, 460V	3-Phase HP @60 Hz, 575V	kW @ 50 Hz, 380/415V	Auxiliary Contacts ²	Product Number ¹	List Price GO-10C2
140A	40	50	100	125	75	1NO-1NC	CK75CE311†	\$725.00
156A	50	60	125	125	90	1NO-1NC	CK08CE311†	\$945.00
192A	60	75	150	150	132	1NO-1NC	CK09BE311†	\$1325.00
302A	100	100	250	300	160	1NO-1NC	CK95BE311†	\$1800.00
398A	125	150	300	400	220	1NO-1NC	CK10CE311 ³	\$2700.00
398A	125	150	300	400	220	1NO-1NC	CK10BE311†	\$2970.00
480A	150	200	400	500	280	1NO-1NC	CK11CE311 ³	\$4200.00
480A	150	200	400	500	280	1NO-1NC	CK11BE311†	\$4620.00
602A	200	250	500	600	375	1NO-1NC	CK12BE311†	\$5700.00

¹To complete the contactor product number, replace the † in the product number with the appropriate digit from the Coil Selection table.

²NO-1NC side auxiliary contact shipped unassembled (A600, Q600).

³CK10C and CK11C versions are for applications with maximum fuse 1000A, maximum breaker 600A. For higher ratings use CK10B and CK11B. Note that the CK10C and CK11C require less panel space.

100-500 Hp (460V) Reversing⁴ Bus Bar Terminals without Lugs

Maximum Current @ 460 V (A) AC-3	3-Phase HP @60 Hz, 200V	3-Phase HP @60 Hz, 230V	3-Phase HP @60 Hz, 460V	3-Phase HP @60 Hz, 575V	kW @ 50 Hz, 380/415V	Auxiliary Contacts ²	Product Number ¹	List Price GO-10C2
140A	40	50	100	125	75	1NO-1NC	KAR75C†	\$2035.00
156A	50	60	125	125	90	1NO-1NC	KAR08C†	\$2475.00
192A	60	75	150	150	132	1NO-1NC	KAR09B†	\$3105.00
302A	100	100	250	300	160	1NO-1NC	KAR95B†	\$4165.00
398A	125	150	300	400	220	1NO-1NC	KAR10C†	\$6365.00
398A	125	150	300	400	220	1NO-1NC	KAR10B†	\$6905.00
480A	150	200	400	500	280	1NO-1NC	KAR11C†	\$9365.00
480A	150	200	400	500	280	1NO-1NC	KAR11B†	\$10205.00
602A	200	250	500	600	375	1NO-1NC	KAR12B†	\$12665.00

¹To complete the contactor product number, replace the † in the product number with the appropriate digit from the Coil Selection table.

²NO-1NC side auxiliary contact shipped unassembled (A600, Q600).

⁴Reversing contactor consists of two (2) contactors, a mechanical interlock, baseplate, power bus bars, cross electrical wiring, and 1NO/1NC side-mounted auxiliary contact for cross electrical and holding interlock. Completely assembled. Note: KAR09 and KAR95 baseplate not suitable for starter assembly. Refer to page 5-88 for reversing starters.

(Replace dagger (†) in product number with appropriate digit from table below.)

Coil Selection Table

AC 60/50 Hz	DC	†Coil Suffix
24-28	24-28	D
42-48	42-28	F
110-127	110-127	J
220-250	220-250	N
380-415	380-415	U
440-500	440-500	Y

Coil suitable for either AC or DC power.



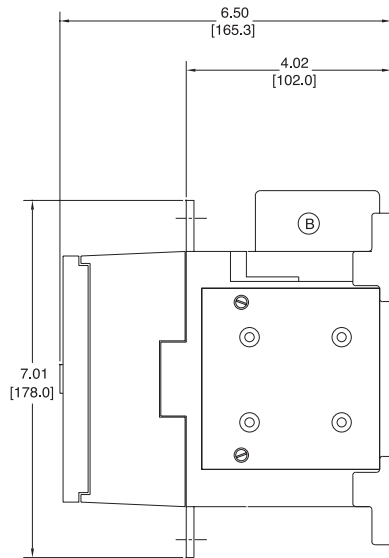
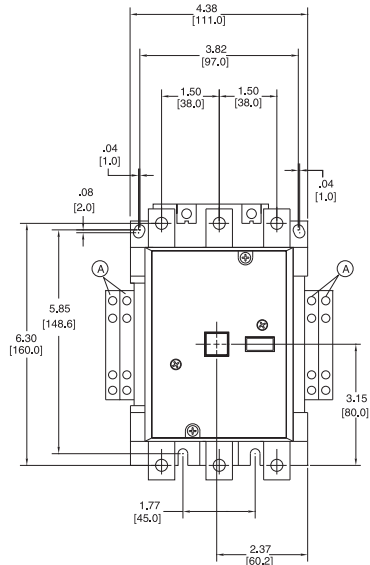
IEC Power Devices

IEC Contactors Dimensions

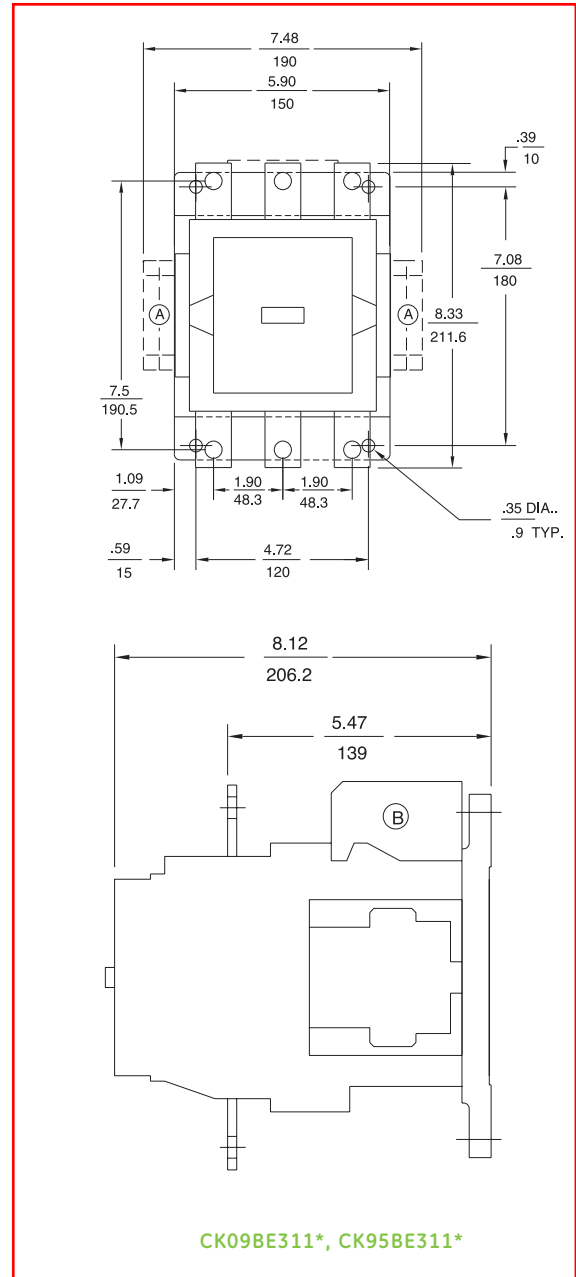
C-2000

Outlines and Dimensions (in $\frac{in}{mm}$) For Estimating Only

Contactor Front View and AC Contactor Side View



CK75CE311*, CK08CE311*



CK09BE311*, CK95BE311*

Legend and Notes

- A Extra Auxiliary Contacts, Side Mounted (if used) (1 Standard)
- B Electronic Actuator Modulator

