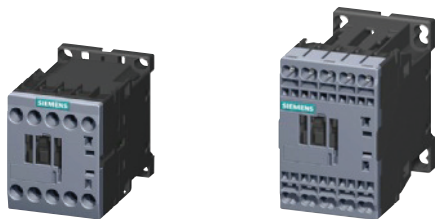


3RT Power Contactors for Switching Motors

3RT20 contactors, 3-pole, 3 ... 25 HP

Selection and ordering data

Size S00 - AC Operation



3RT3RT20 1.-1A...

3RT20 1.-2A...

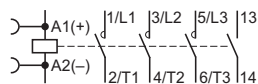
AC data		UL data				Auxiliary contacts			Rated control supply voltage	Screw terminals	Weight approx.		
Amp ratings		Single-phase HP ratings		Three-phase HP ratings					U _c at 50/60 Hz	Spring-type terminals			
AC3	AC1	115 V	230 V	200 V	230 V	460 V	575 V	Ident No.	NO	NC	V AC	Order No.	kg

For screw and DIN Rail mounting onto TH 35 standard mounting rail

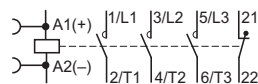
Size S00¹⁾

Terminal designations according to EN 50012 or EN 50005

- With auxiliary contact 1 NO, identification number **10 E**



- With auxiliary contact 1 NC, identification number **01**



7	18	1/4	3/4	1 1/2	2	3	5	10E	1	--	24	3RT20 15-□AB01	0.28/0.30
7	18	1/4	3/4	1 1/2	2	3	5	10E	1	--	110/120	3RT20 15-□AK61	0.28/0.30
7	18	1/4	3/4	1 1/2	2	3	5	10E	1	--	220/240	3RT20 15-□AP61	0.28/0.30
7	18	1/4	3/4	1 1/2	2	3	5	01	--	1	24	3RT20 15-□AB02	0.28/0.30
7	18	1/4	3/4	1 1/2	2	3	5	01	--	1	110/120	3RT20 15-□AK62	0.28/0.30
7	18	1/4	3/4	1 1/2	2	3	5	01	--	1	220/240	3RT20 15-□AP62	0.28/0.30
9	22	1/3	1	2	3	5	7 1/2	10E	1	--	24	3RT20 16-□AB01	0.28/0.30
9	22	1/3	1	2	3	5	7 1/2	10E	1	--	110/120	3RT20 16-□AK61	0.28/0.30
9	22	1/3	1	2	3	5	7 1/2	10E	1	--	220/240	3RT20 16-□AP61	0.28/0.30
9	22	1/3	1	2	3	5	7 1/2	01	--	1	24	3RT20 16-□AB02	0.28/0.30
9	22	1/3	1	2	3	5	7 1/2	01	--	1	110/120	3RT20 16-□AK62	0.28/0.30
9	22	1/3	1	2	3	5	7 1/2	01	--	1	220/240	3RT20 16-□AP62	0.28/0.30
12	22	1/2	2	3	3	7 1/2	10	10E	1	--	24	3RT20 17-□AB01	0.28/0.30
12	22	1/2	2	3	3	7 1/2	10	10E	1	--	110/120	3RT20 17-□AK61	0.28/0.30
12	22	1/2	2	3	3	7 1/2	10	10E	1	--	220/240	3RT20 17-□AP61	0.28/0.30
12	22	1/2	2	3	3	7 1/2	10	01	--	1	24	3RT20 17-□AB02	0.28/0.30
12	22	1/2	2	3	3	7 1/2	10	01	--	1	110/120	3RT20 17-□AK62	0.28/0.30
12	22	1/2	2	3	3	7 1/2	10	01	--	1	220/240	3RT20 17-□AP62	0.28/0.30
16	22	1	2	3	5	10	10	10E	1	--	24	3RT20 18-□AB01	0.28/0.30
16	22	1	2	3	5	10	10	10E	1	--	110/120	3RT20 18-□AK61	0.28/0.30
16	22	1	2	3	5	10	10	10E	1	--	220/240	3RT20 18-□AP61	0.28/0.30
16	22	1	2	3	5	10	10	01	--	1	24	3RT20 18-□AB02	0.28/0.30
16	22	1	2	3	5	10	10	01	--	1	110/120	3RT20 18-□AK62	0.28/0.30
16	22	1	2	3	5	10	10	01	--	1	220/240	3RT20 18-□AP62	0.28/0.30

Screw terminals 1
Spring-loaded terminals 2
Ring lug terminals 4

AC data		UL data				Auxiliary contacts			NEMA Size	Screw terminals	Weight approx.		
Amp ratings		Single-phase HP ratings		Three-phase HP ratings						Order No.			
AC3	AC1	115 V	230 V	200 V	230 V	460 V	575 V	Ident No.	NO	NC	V AC	Order No.	kg

NEMA Labeled Contactors²⁾

16	22	1	2	3	5	10	10	10E	1	--	0	3RT20 18-1AK61-0UA0	0.280
----	----	---	---	---	---	----	----	-----	---	----	---	---------------------	-------

For other voltages see page 3/17.

For contactors with permanently mounted auxiliary switch block see pages 3/9, 3/11, 3/13, 3/15.

For accessories and spare parts, see page 3/93.

¹⁾ For coil operating range, see page 3/17.

²⁾ NEMA labeled Contactor has 110/120 V AC control with screw terminals.