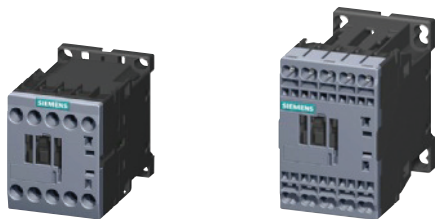


# 3RT Power Contactors for Switching Motors

## 3RT20 contactors, 3-pole, 3 ... 25 HP

### Selection and ordering data

#### Size S00 - AC Operation



3RT3RT20 1.-1A...

3RT20 1.-2A...

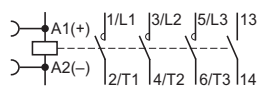
AC data		UL data				Auxiliary contacts			Rated control supply voltage		Screw terminals		Weight approx.
Amp ratings	AC1	Single-phase HP ratings		Three-phase HP ratings		NO	NC	V AC	Order No.	Spring-type terminals			
AC3		115 V	230 V	200 V	230 V	460 V	575 V			U <sub>c</sub> at 50/60 Hz			
								Ident No.				kg	

#### For screw and DIN Rail mounting onto TH 35 standard mounting rail

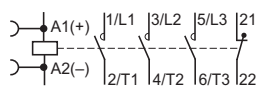
##### Size S00<sup>1)</sup>

Terminal designations according to EN 50012 or EN 50005

- With auxiliary contact 1 NO, identification number **10 E**



- With auxiliary contact 1 NC, identification number **01**



7	18	1/4	3/4	1 1/2	2	3	5	10E	1	--	24	<b>3RT20 15-□AB01</b>	0.28/0.30
7	18	1/4	3/4	1 1/2	2	3	5	10E	1	--	110/120	<b>3RT20 15-□AK61</b>	0.28/0.30
7	18	1/4	3/4	1 1/2	2	3	5	10E	1	--	220/240	<b>3RT20 15-□AP61</b>	0.28/0.30
7	18	1/4	3/4	1 1/2	2	3	5	01	--	1	24	<b>3RT20 15-□AB02</b>	0.28/0.30
7	18	1/4	3/4	1 1/2	2	3	5	01	--	1	110/120	<b>3RT20 15-□AK62</b>	0.28/0.30
7	18	1/4	3/4	1 1/2	2	3	5	01	--	1	220/240	<b>3RT20 15-□AP62</b>	0.28/0.30
9	22	1/3	1	2	3	5	7 1/2	10E	1	--	24	<b>3RT20 16-□AB01</b>	0.28/0.30
9	22	1/3	1	2	3	5	7 1/2	10E	1	--	110/120	<b>3RT20 16-□AK61</b>	0.28/0.30
9	22	1/3	1	2	3	5	7 1/2	10E	1	--	220/240	<b>3RT20 16-□AP61</b>	0.28/0.30
9	22	1/3	1	2	3	5	7 1/2	01	--	1	24	<b>3RT20 16-□AB02</b>	0.28/0.30
9	22	1/3	1	2	3	5	7 1/2	01	--	1	110/120	<b>3RT20 16-□AK62</b>	0.28/0.30
9	22	1/3	1	2	3	5	7 1/2	01	--	1	220/240	<b>3RT20 16-□AP62</b>	0.28/0.30
12	22	1/2	2	3	3	7 1/2	10	10E	1	--	24	<b>3RT20 17-□AB01</b>	0.28/0.30
12	22	1/2	2	3	3	7 1/2	10	10E	1	--	110/120	<b>3RT20 17-□AK61</b>	0.28/0.30
12	22	1/2	2	3	3	7 1/2	10	10E	1	--	220/240	<b>3RT20 17-□AP61</b>	0.28/0.30
12	22	1/2	2	3	3	7 1/2	10	01	--	1	24	<b>3RT20 17-□AB02</b>	0.28/0.30
12	22	1/2	2	3	3	7 1/2	10	01	--	1	110/120	<b>3RT20 17-□AK62</b>	0.28/0.30
12	22	1/2	2	3	3	7 1/2	10	01	--	1	220/240	<b>3RT20 17-□AP62</b>	0.28/0.30
16	22	1	2	3	5	10	10	10E	1	--	24	<b>3RT20 18-□AB01</b>	0.28/0.30
16	22	1	2	3	5	10	10	10E	1	--	110/120	<b>3RT20 18-□AK61</b>	0.28/0.30
16	22	1	2	3	5	10	10	10E	1	--	220/240	<b>3RT20 18-□AP61</b>	0.28/0.30
16	22	1	2	3	5	10	10	01	--	1	24	<b>3RT20 18-□AB02</b>	0.28/0.30
16	22	1	2	3	5	10	10	01	--	1	110/120	<b>3RT20 18-□AK62</b>	0.28/0.30
16	22	1	2	3	5	10	10	01	--	1	220/240	<b>3RT20 18-□AP62</b>	0.28/0.30

Screw terminals **1**  
Spring-loaded terminals **2**  
Ring lug terminals **4**

AC data		UL data				Auxiliary contacts			NEMA Size		Screw terminals		Weight approx.
Amp ratings	AC1	Single-phase HP ratings		Three-phase HP ratings		NO	NC		Order No.	Spring-type terminals			
AC3		115 V	230 V	200 V	230 V	460 V	575 V						
								Ident No.				kg	

#### NEMA Labeled Contactors<sup>2)</sup>

16	22	1	2	3	5	10	10	10E	1	--	0	<b>3RT20 18-1AK61-0UA0</b>	0.280
----	----	---	---	---	---	----	----	-----	---	----	---	----------------------------	-------

For other voltages see page 3/17.

For contactors with permanently mounted auxiliary switch block see pages 3/9, 3/11, 3/13, 3/15.

For accessories and spare parts, see page 3/93.

<sup>1)</sup> For coil operating range, see page 3/17.

<sup>2)</sup> NEMA labeled Contactor has 110/120 V AC control with screw terminals.