

Contactors and Contactor Assemblies

Contactors for Switching Motors



3RT10 contactors, 3-pole

Selection and ordering data

* AC or DC Coil

* Screw Terminals or Spring Loaded Terminal



3RT10 1.-1A...



3RT10 1.-2A...



3RT10 2.-1A.00



3RT10 2.-3A.00



3RT10 3.-1A.00



3RT10 4.-1A.00

Frame size	Amp ratings		Single phase HP ratings		Three phase HP ratings				Auxiliary contacts		Screw terminals	Spring loaded terminals ¹⁾	Weight approx. AC/DC kg
	AC3	AC1	115 V	230 V	200 V	230 V	460 V	575 V	NO	NC	Order No.	Order No.	
S00	7	18	0.25	0.75	1.5	2	3	5	10	0	3RT10 15-1□●●1 3RT10 15-1□●●2	3RT10 15-2□●●1 3RT10 15-2□●●2	0.20/0.26
	9	22	0.33	1	2	3	5	7.5	1	0	3RT10 16-1□●●1 3RT10 16-1□●●2	3RT10 16-2□●●1 3RT10 16-2□●●2	
	12	22	0.5	2	3	3	7.5	10	1	0	3RT10 17-1□●●1 3RT10 17-1□●●2	3RT10 17-2□●●1 3RT10 17-2□●●2	
S0	9	40	0.33	1	2	3	5	7.5	0	0	3RT10 23-1□●●0	3RT10 23-3□●●0	0.35/0.58
	12	40	0.5	2	3	3	7.5	10	0	0	3RT10 24-1□●●0	3RT10 24-3□●●0	
	17	40	1	3	5	5	10	15	0	0	3RT10 25-1□●●0	3RT10 25-3□●●0	
S2	25	40	2	3	7.5	7.5	15	20	0	0	3RT10 26-1□●●0	3RT10 26-3□●●0	0.85/1.45
	28	50	2	5	7.5	10	20	25	0	0	3RT10 33-1□●●0	3RT10 33-3□●●0	
	32	50	2	5	10	10	25	30	0	0	3RT10 34-1□●●0	3RT10 34-3□●●0	
S3	40	60	3	7.5	10	15	30	40	0	0	3RT10 35-1□●●0	3RT10 35-3□●●0	1.8/2.8
	50	60	3	10	15	15	40	50	0	0	3RT10 36-1□●●0	3RT10 36-3□●●0	
	65	100	5	15	20	25	50	60	0	0	3RT10 44-1□●●0	3RT10 44-3□●●0	
S3	80	120	7.5	15	25	30	60	75	0	0	3RT10 45-1□●●0	3RT10 45-3□●●0	1.8/2.8
	95	120	10	-	30	30	75	100	0	0	3RT10 46-1□●●0	3RT10 46-3□●●0	

AC Coil = A
DC Coil = B

A
B

NEMA Labeled Contactors

NEMA size	Amp ratings	Single phase HP ratings		Three phase HP ratings				Auxiliary contacts		Screw terminals with AC coil	Screw terminals with 24 V DC coil	Weight approx. AC/DC kg
		115 V	230 V	200 V	230 V	460 V	575 V	NO	NC	Order No.	Order No.	
0	18	1	2	3	3	5	5	1	0	3RT10 17-1A●●1-0UA0	3RT10 17-1BB41-0UA0	0.20/0.26
1	27	2	3	7.5	7.5	10	10	0	0	3RT10 26-1A●●0-0UA0	3RT10 26-1BB40-0UA0	0.35/0.58
2	45	3	7.5	10	15	25	25	0	0	3RT10 36-1A●●0-0UA0	3RT10 36-1BB40-0UA0	0.85/1.45
3	90	10	20	25	30	50	50	0	0	3RT10 46-1A●●0-0UA0	3RT10 46-1BB40-0UA0	1.8/2.8

¹⁾ All terminals are spring loaded on frame size S00. Only the coil terminals are spring loaded on frame sizes S0, S2 & S3.

For further coil voltages, see page 2/23.
For auxiliaries and accessories, see page 2/35-51.
For spare parts, see page 2/54-58.
For technical data, see page 2/86-107.
For description, see page 2/65-66.
For int. circuit diagrams, see page 2/156.
For dimension drawings, see page 2/172-175.

AC Coil Selection for 3RT101 through 3RT104, □ = A							
Coil Code	C2 ²⁾	H2 ³⁾	K6	P6	U6	V6	T6
60 Hz	24 V	48 V	120 V	240 V	277 V	480 V	600 V
50 Hz	24 V	48 V	110 V	220 V	-	-	-

²⁾ Use code **B0** for 3RT101, S00
³⁾ Use code **H0** for 3RT101, S00

DC Coil Selection for 3RT101 through 3RT104, □ = B						
Coil Code	A4 ⁴⁾	B4	W4	E4	F4	M4
DC	12 V	24 V	48 V	60 V	110 V	220 V

⁴⁾ 3RT101 Only

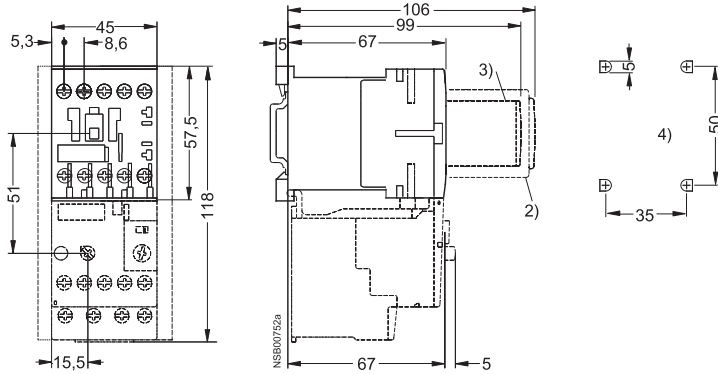


3RT10 contactors, 3-pole

Dimension drawings

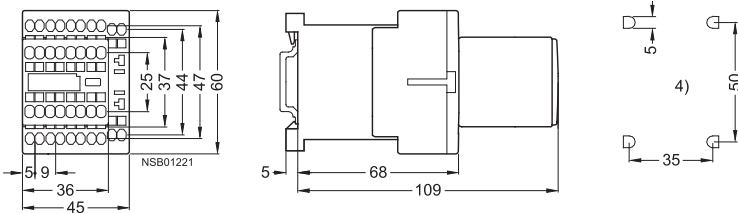
3RT10 1 contactors
Size S00 and NEMA Size 0, screw connection
 with surge suppressor, auxiliary switch block and mounted overload relay

Lateral clearance from
 earthed parts = 6 mm

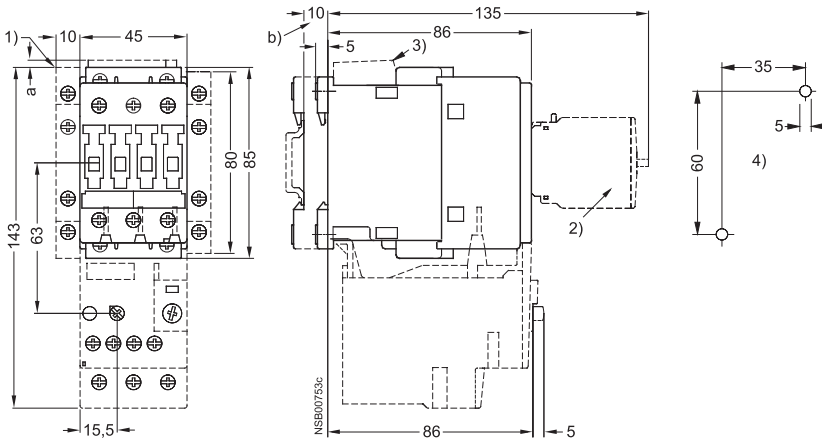


- 2) Auxiliary switch block
 (also 3RH19 11- . NF . . solid-state compatible design)
- 3) Surge suppressor
 (also 3RT19 16-1GA00 additional load module)
- 4) Drilling pattern

3RT10 1 contactors
Size S00, Cage Clamp connection
 with auxiliary switch block



3RT10 2 contactors, 3RT10 2 coupling relays
Size S0 and NEMA Size 1, screw connection
 with surge suppressor, auxiliary switch blocks and mounted overload relay



- For size S0:**
- a = 3 mm at < 240 V
 - a = 7 mm at > 240 V
 - b = DC 10 mm deeper than AC
- 1) Auxiliary switch block, laterally mountable
 - 2) Auxiliary switch block, mountable on the front,
 1, 2 and 4-pole (also 3RH19 21- . FE22 solid-state compatible design)
 - 3) Surge suppressor
 - 4) Drilling pattern